

## REGISTER ONLINE:

<https://community.smenet.org/events/calendar?ssopc=1>

REGISTRATION DEADLINE: N/A

Send registrations to:

Meetings & Membership Department, SME  
12999 E Adam Aircraft Cir.  
Englewood, CO 80112  
Tel: 303-948-4222; Fax: 303-979-3461

SME, CIM, AusIMM, and SAIMM Members:  
\$2,550 USD (Excluding taxes)

Non-members:  
\$2,750 USD (Excluding taxes)

Title: \_\_\_\_\_ Name: \_\_\_\_\_

SME, CIM, AusIMM or SAIMM Member #: \_\_\_\_\_

Job Title: \_\_\_\_\_

Employer: \_\_\_\_\_

Postal Address: \_\_\_\_\_

City: \_\_\_\_\_

Prov/State: \_\_\_\_\_ Postal/Zip Code: \_\_\_\_\_

Country: \_\_\_\_\_

Phone: \_\_\_\_\_

Fax: \_\_\_\_\_

Email: \_\_\_\_\_

I will bring a laptop:  Yes  No

Payment:

Visa  MasterCard  Amex

Cheque  Wire Transfer

Card Number: \_\_\_\_\_

Expiry Date: / \_\_\_\_\_ Amount \$: \_\_\_\_\_

CCV Code (3 digit code on back of card): \_\_\_\_\_

Name on Card: \_\_\_\_\_

Signature: \_\_\_\_\_

Registration includes course notes, lunch, and morning and afternoon tea.

Participation in this course may be a valid activity towards continuing professional development with up to 26 contact hours. Participants receive a Certificate of Completion.

Notification of Cancellation received in writing up to September 3, 2021 (minimum of 10 working days before the course) will incur a 20% cancellation fee. No refund will be made after this time. An alternative participant may be nominated.

## INSTRUCTORS

**Georges Verly**, Ph.D., P.Eng., is Chief Geostatistician at Amec Foster Wheeler (now Wood). Georges has close to 40 years of experience in consulting, operations and academic experience on gold, copper, nickel, uranium and other mineral properties and mines worldwide. His areas of specialization include geostatistics, conditional simulation of geological and grade models, mineral resource estimation, grade control, resource audits and training. Before joining Wood, Georges was a Consulting Geostatistician with Placer Dome/Barrick, where he developed practical applications of simulations to resource estimation and grade control for a number of operations and projects, and participated to the development of Placer Dome's standards for geological and resource modeling processes. He has taught geostatistics courses at the University of Nevada's MacKay School of Mines, UBC, Concordia University and Université du Québec à Chicoutimi, as well as to a number of private-sector organizations.

**Roussos Dimitrakopoulos** is a Professor and Canada Research Chair (Tier I) in Sustainable Mineral Resource Development and Optimization under Uncertainty, and Director, COSMO - Stochastic Mine Planning Laboratory. He holds a PhD from École Polytechnique de Montréal and an MSc from the University of Alberta. He works on risk-based simulation and stochastic optimization in mine planning and production scheduling, the simultaneous optimization of mining complexes and mineral value chains under uncertainty. He has taught short courses and worked in Australia, North America, South America, Europe, the Middle East, South Africa and Japan. He received the Synergy Award of Innovation in 2012 by the Governor General of Canada for research contributions to mining science and engineering and his long-standing partnership with AngloGold Ashanti, Barrick Gold, BHP, De Beers, IAMGOLD, Kinross Gold, Newmont and Vale. In 2013, he received AIME's Mineral Economics Award, and was a CIM distinguished lecturer in 2015-2016.

## TO BE OFFERED VIRTUALLY

January 10-13

January 17-21

January 24, 2022

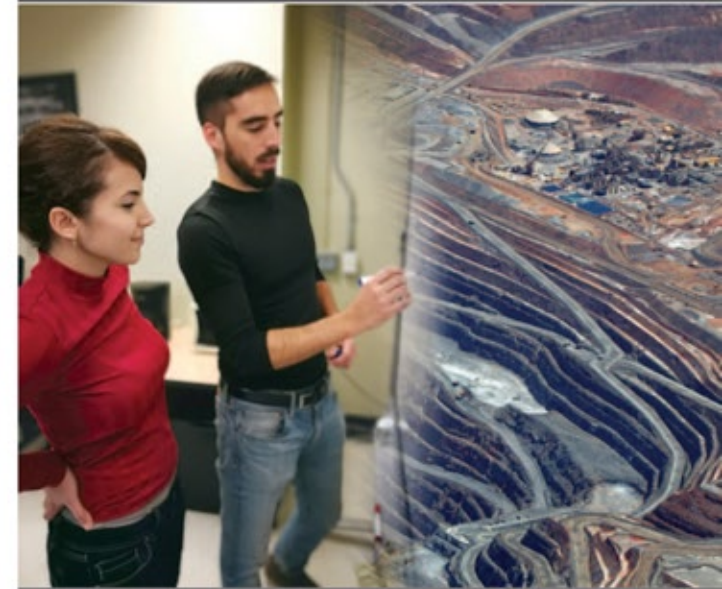
11:30am to 4:30pm / Montreal time (EDT)



[cosmo.mcgill.ca](http://cosmo.mcgill.ca)

COSMO - Stochastic Mine Planning Laboratory, a global centre for leading-edge research and graduate education in "orebody modelling and strategic mine planning with uncertainty", is supported by AngloGold Ashanti, Barrick Gold, BHP, De Beers, IAMGOLD, Kinross Gold, Newmont, Vale, and the Canada Research Chairs Program, NSERC, and CFI.

# PROFESSIONAL DEVELOPMENT SERIES 2022



STRATEGIC RISK QUANTIFICATION  
& MANAGEMENT FOR ORE RESERVES & MINE PLANNING

## GEOSTATISTICAL MINERAL RESOURCE ESTIMATION AND MEETING THE NEW REGULATORY ENVIRONMENT: STEP BY STEP FROM SAMPLING TO GRADE CONTROL

**Georges Verly**  
Wood, Canada

**Roussos Dimitrakopoulos**  
McGill University, Canada

January 10-24, 2022  
Montreal, Canada





## CONTENT AND OBJECTIVES

This course is designed according to the latest regulations on public reporting of Mineral Resources. It aims at showing how state-of-the-art statistical and geostatistical techniques help answering the requirements of those regulations in an objective and reproducible manner. A particular emphasis is put on understanding sampling and estimation errors and how to assign levels of estimation confidence through the application of resource classification fundamentals. In addition to a solid introduction to mining geostatistics this course provides a comprehensive overview of industry's best practices in the broader field of Mineral Resource estimation.

*Attendees will learn:*

- How to use statistical inference to identify problems with the data
- How to produce models that address the needs of mining companies
- Compliance with the standards of NI43-101, SEC Mining Disclosure Rules and JORC
- Effective workflows from data preparation to resource classification
- How to validate, reconcile and communicate resource estimation results
- The fundamentals of resource classification and how to apply them in practice
- How to produce auditable and reproducible resource estimates
- Estimation of grade control models and best practices in ore selection
- Spatial estimation of geometallurgical data
- How to use conditional simulations to quantify uncertainty in resource estimates
- How to integrate orebody simulations into mine planning

## COURSE OUTLINE

### Public Reporting of Mineral Resources and Mineral Reserves

- Resource estimation and the mining business cycle
- Meeting the definition of mineral resources and mineral reserves
- International standards for public reporting

### Data Concepts

- Geological data acquisition and data verification
- Quality Assurance and Quality Control
- Detection limit, contamination, precision and accuracy

### Geological Modeling

- Geological setting and modeling criteria
- Geological interpretation and 3D modeling
- Common traps and pitfalls

### Exploratory Data Analysis

- Statistical inference and spatial declustering
- Identifying geological controls over grades
- Characterizing geological boundaries
- Dealing with outliers
- Selection of compositing methodology and composite size

### Variography

- Spatial relationships and the variogram
- Inference of spatial continuity
- Variogram parameters and geology
- Practical modeling of variograms

**Please note:** It is strongly recommended that participants bring a laptop and no previous exposure to statistics and geostatistics is required.

### Estimation

- Change of support concepts
- Spatial estimation and estimation errors
- Kriging explained
- Ordinary Kriging, Indicator Kriging, Uniform Conditioning
- Calibration of estimation parameters
- Block model validation
- Grade control models

### Resource classification

- Definitions and methodologies
- Classification criteria: best practices and applications of technical and economic constraints

### Introduction to Conditional Simulation

- Assessment of geological uncertainty
- Methods and applications
- Translating geological uncertainty into production risks
- Geological risk in mineral value chain optimization

### Special topics

- Spatial estimation of geometallurgical attributes
- Reconciliation - Delivering on promises

## WHO SHOULD ATTEND

Exploration and mine geologists, resource analysts, mining engineers, and anyone acting in the role of "qualified" or "competent person".

2018 Springer publication entitled:  
"Advances in Applied Strategic Mine Planning"  
(Editor Roussos Dimitrakopoulos)  
is included with the course materials.

